



Cloud Computing

“Reality Check”

Presented by:

Xvand Technology Corporation - Provider of IsUtility®

Email: ycagen@xvand.com



Q. Why do cloud projects fail ?

A. Misalignment

TOP
3





Golden Rule: Don't Go in Cold!

Most overlooked cloud issues



1.

Benefits

Objectives

Top IT Challenges:

DATA BACKUPS

DISASTER RECOVERY

SYSTEM MONITORING

SECURITY THREATS

APPLICATION SECURITY

SERVER CRASHES

VENDOR FINANCIALS

SYSTEM DOWNTIME

SYSTEM UPGRADES / PATCHES

UNRESPONSIVE SUPPORT

LOST / STOLEN DATA

CLOUD COLLABORATION

NICKLE-AND-DIME I.T. COSTS

MULTI-OFFICE INTEGRATION

BUSINESS PROCESS INTEGRATION

90%

IT BUDGET

Align Transition to Business Goals

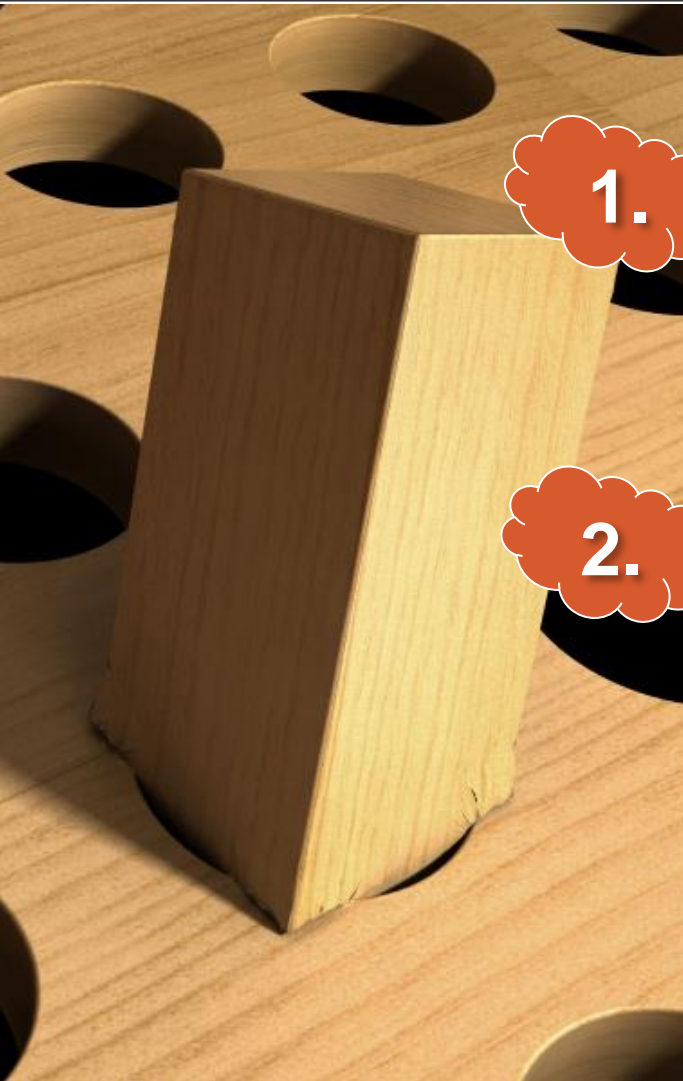
Identify Critical Systems

- Key processes and applications
- Dependencies on other systems
- Interaction with other systems
- Manual process and intervention
- Compliance requirements

1. Gauge success

2. Choose the right model

Most overlooked cloud issues



1.

Benefits

Objectives

2.

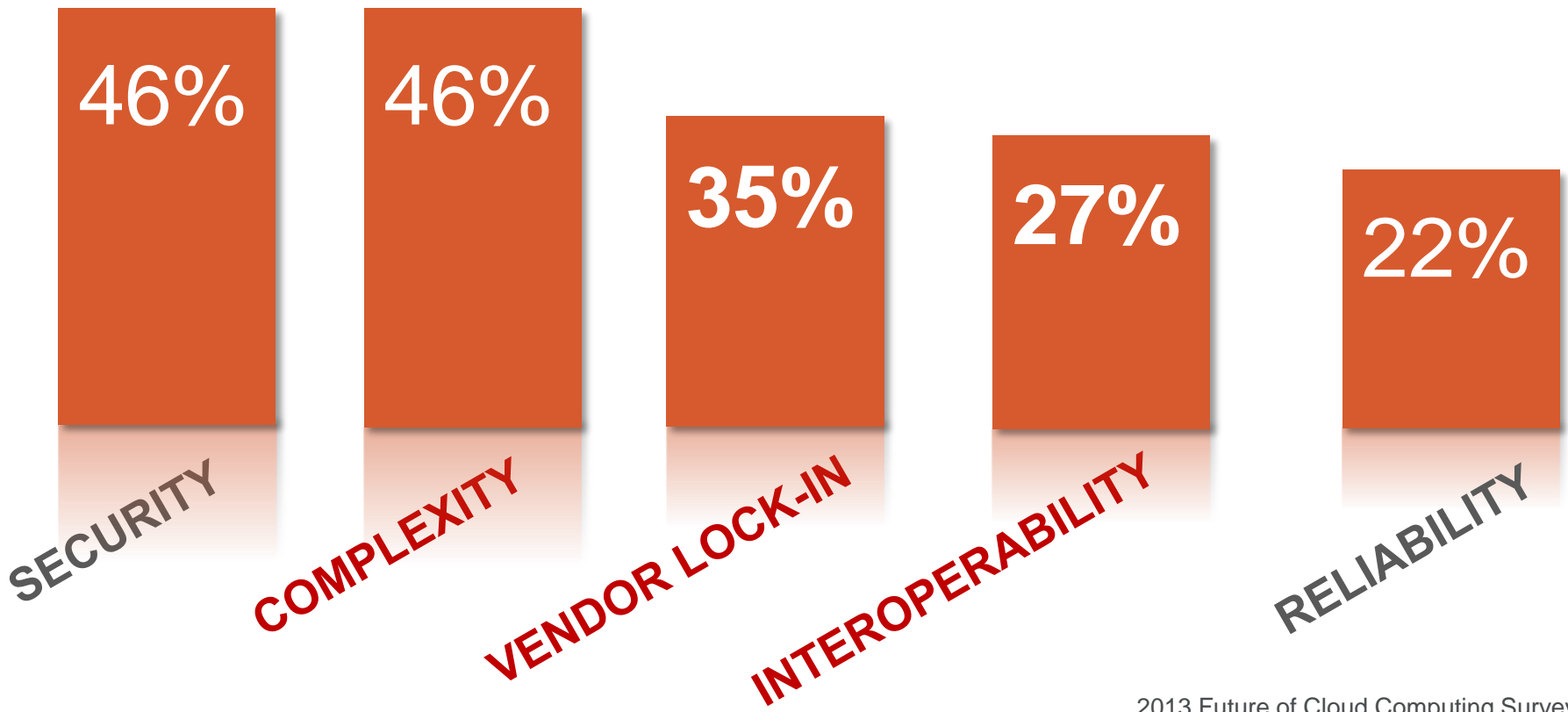
Systems

Other Systems



Integrating new systems

Key Cloud Inhibitors



2013 Future of Cloud Computing Survey

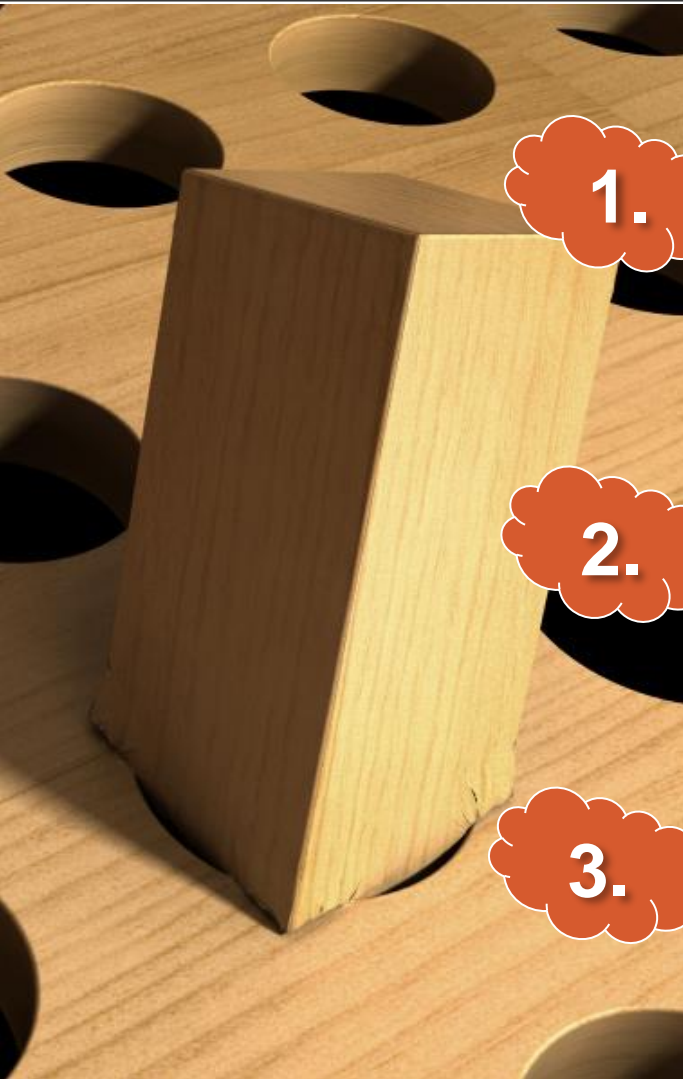
SURVEY:

Critical, Yet Uncommon Cloud Question?

“How will this affect
my employees?”



Most overlooked cloud issues



1.

Benefits

Objectives

2.

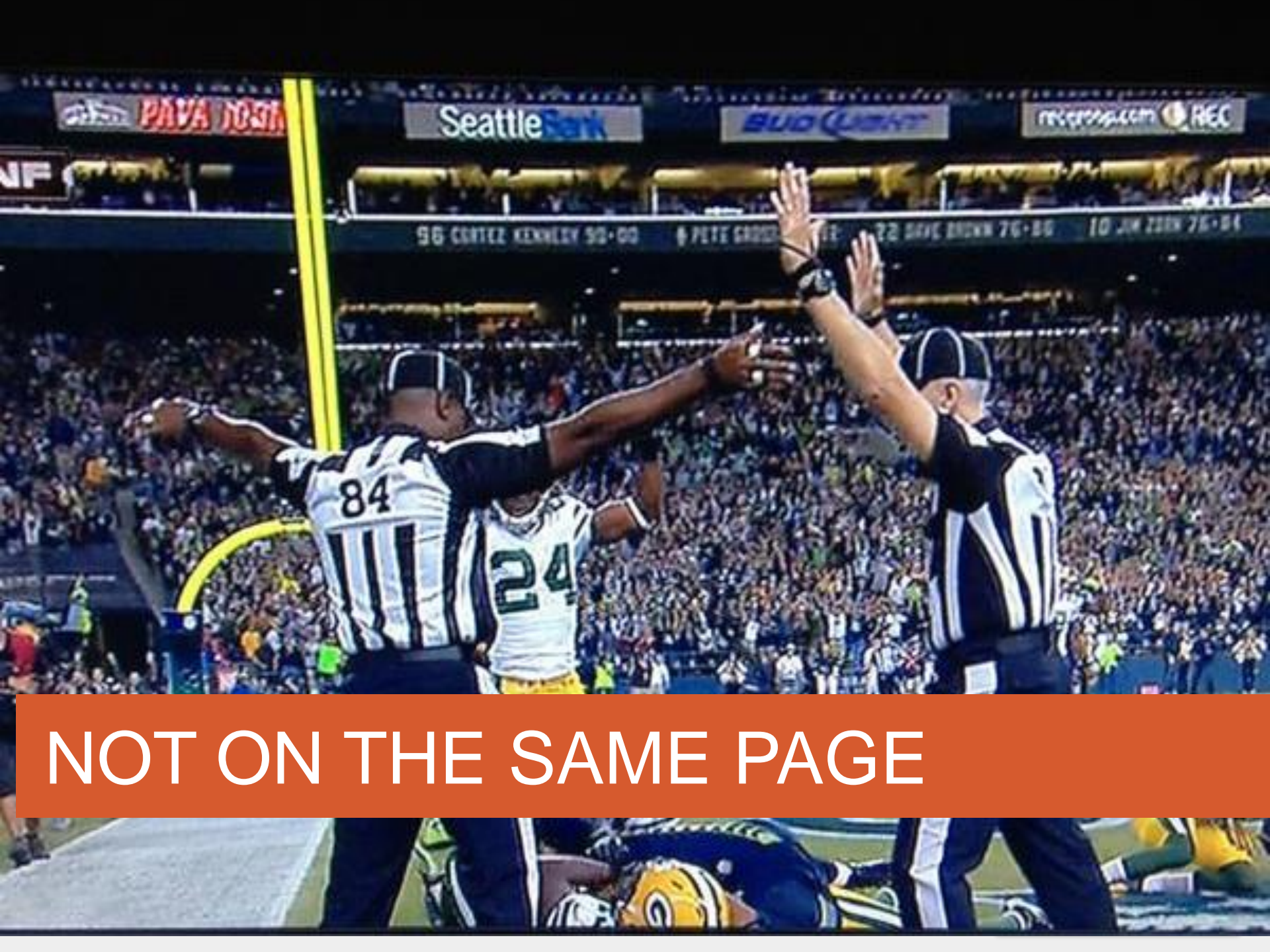
Systems

Other Systems

3.

Management

End-users



NOT ON THE SAME PAGE

Example:



Millennials: **BYOD** a deal-breaker



COLLABORATION



1. How quickly will employees adjust?
2. Does testing reflect actual user roles?
3. Are change-related tasks are in sync with IT?

C ONFIDENCE



1. Employees can perform functions after transition
2. Employees are comfortable with new systems/processes
3. Employees are confident that there's adequate support
4. Employees can resolve technical issues
5. **Final phase is tested by end-users**

COMMUNICATION



1. Are employees aware of timeline?
2. How are employees affected?
3. How will employees respond?
4. Is communication structured?

What will change?

(Know before the transition)



1. Changes in performance?
2. How will security change?
3. How to add/remove users?
4. How to add new software?
5. Video/streaming limitations?
6. Will the interface change?
7. Length of transition process
8. Management: Less control?

Administrative Console

(Example)

The screenshot displays the IsUtility Administrative Console interface. At the top left is the IsUtility logo. To its right is a dropdown menu showing 'XVAND - Xvand Technologies Co.' and a 'Refresh' button. Below these are navigation tabs: Status, Users, Removed, Messages, Applications, Security, Logins, E-mails, and Reports. The Reports tab is active, and a dropdown menu is open, listing the following report options: Choose report..., Login log, User Workstations, Printers Usage, Printers Usage Details, Blackberry Usage, Active Sync Users iPhone, IM Users, Virus Protected Desktops, Web site surf log, Workstation Info (OS,Name,Latest Online Date), and Available Workstation Names.

Mitigating The Risks



Enforce Usage

(People resist change. Make it easy.)



www.isutility.com

832-204-4848

ycagen@xvand.com